

Have we reached a 1000 prefixes yet?

A snapshot of the global IPv6 routing table

Gert Döring, SpaceNet AG, Munich, Germany

Oct 15, 2008

ARIN XXII, Los Angeles, USA

presented by CJ Aronson

And the answer is...



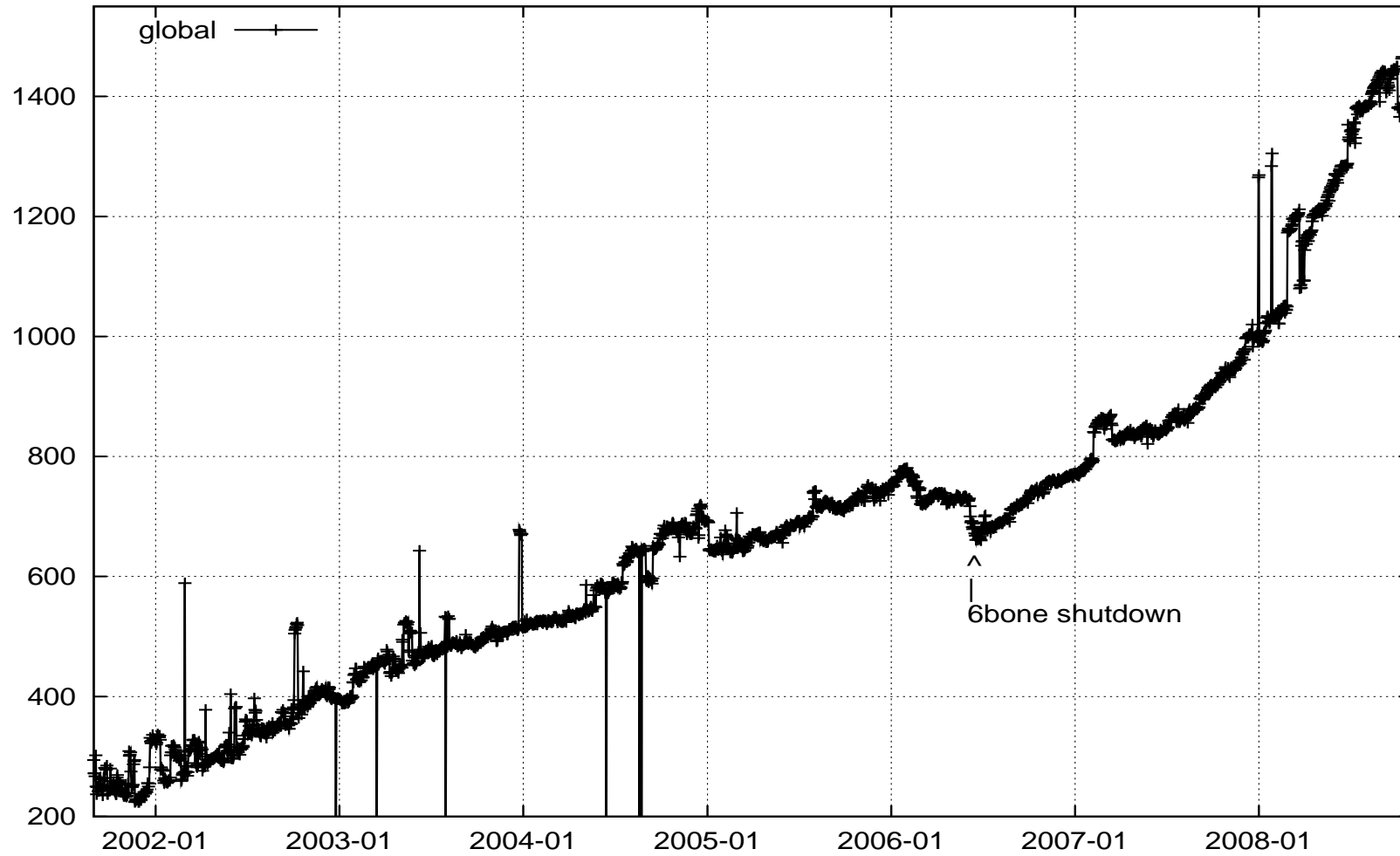
Overview

- pictures & trends
- numbers...
- things that should not be there...
- route6 current practices
- references

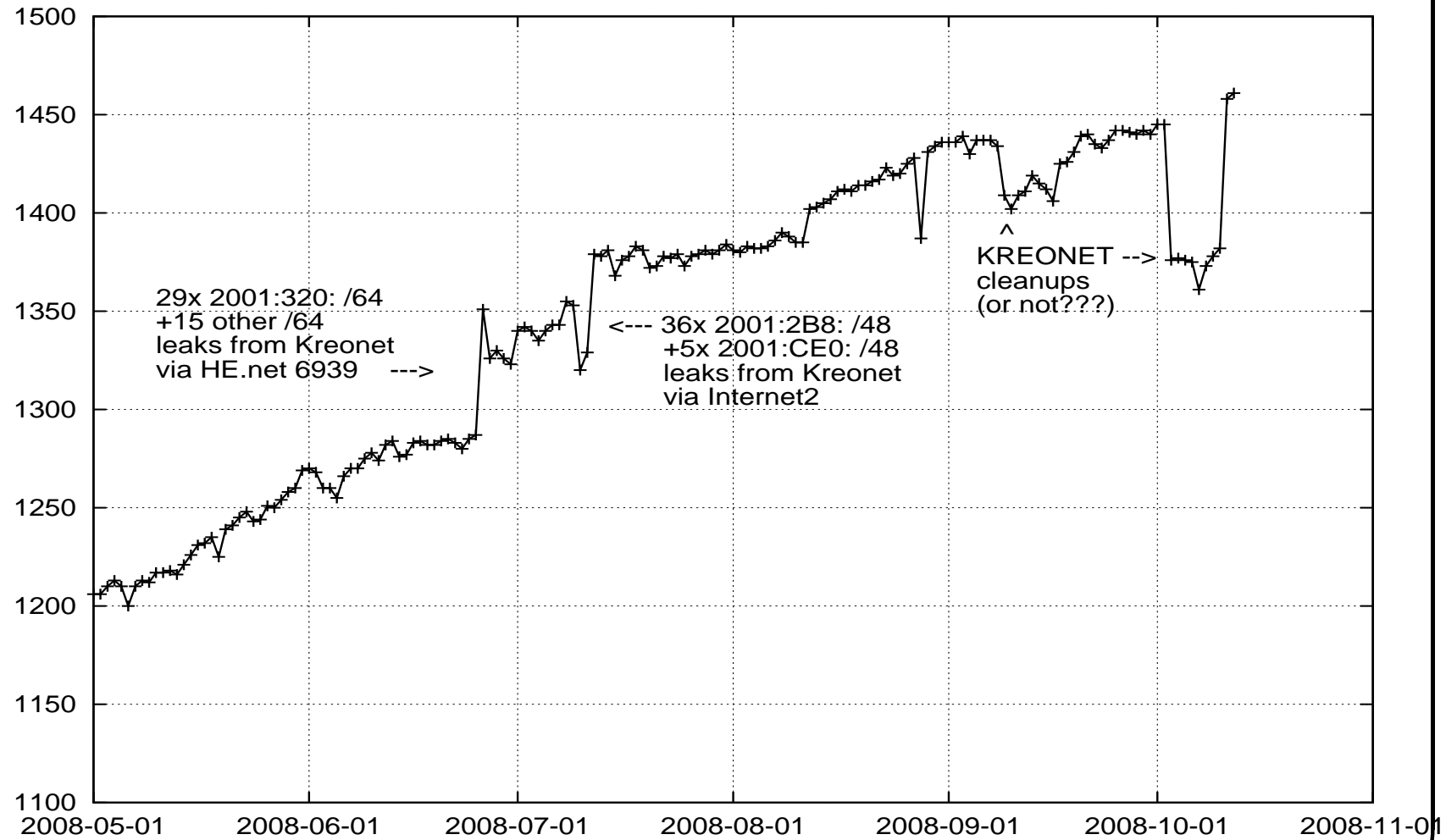
Slides online at:

<http://www.space.net/~gert/RIPE/Arin22-v6-table/>

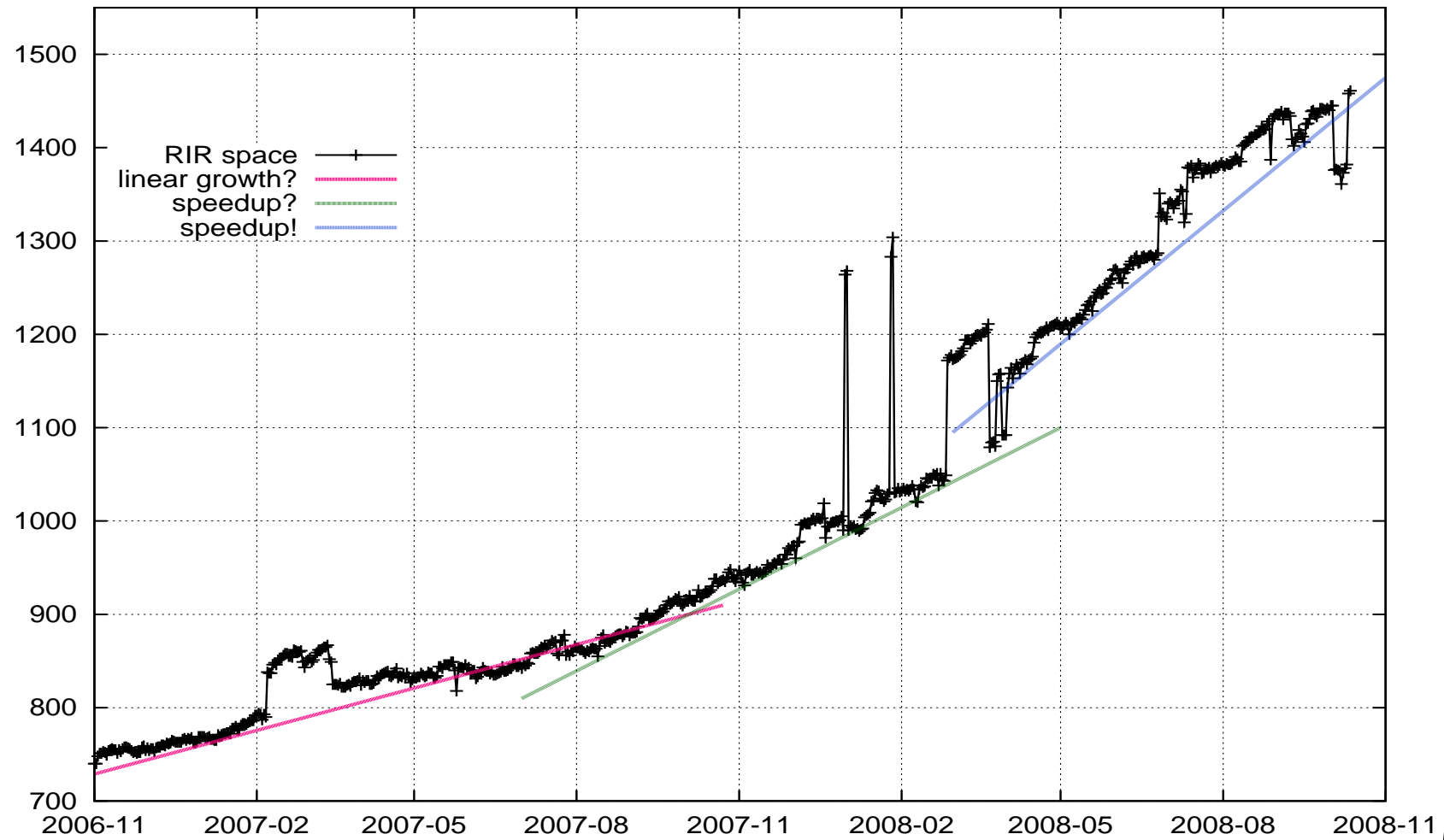
Graphics: Total Prefixes - 7 years



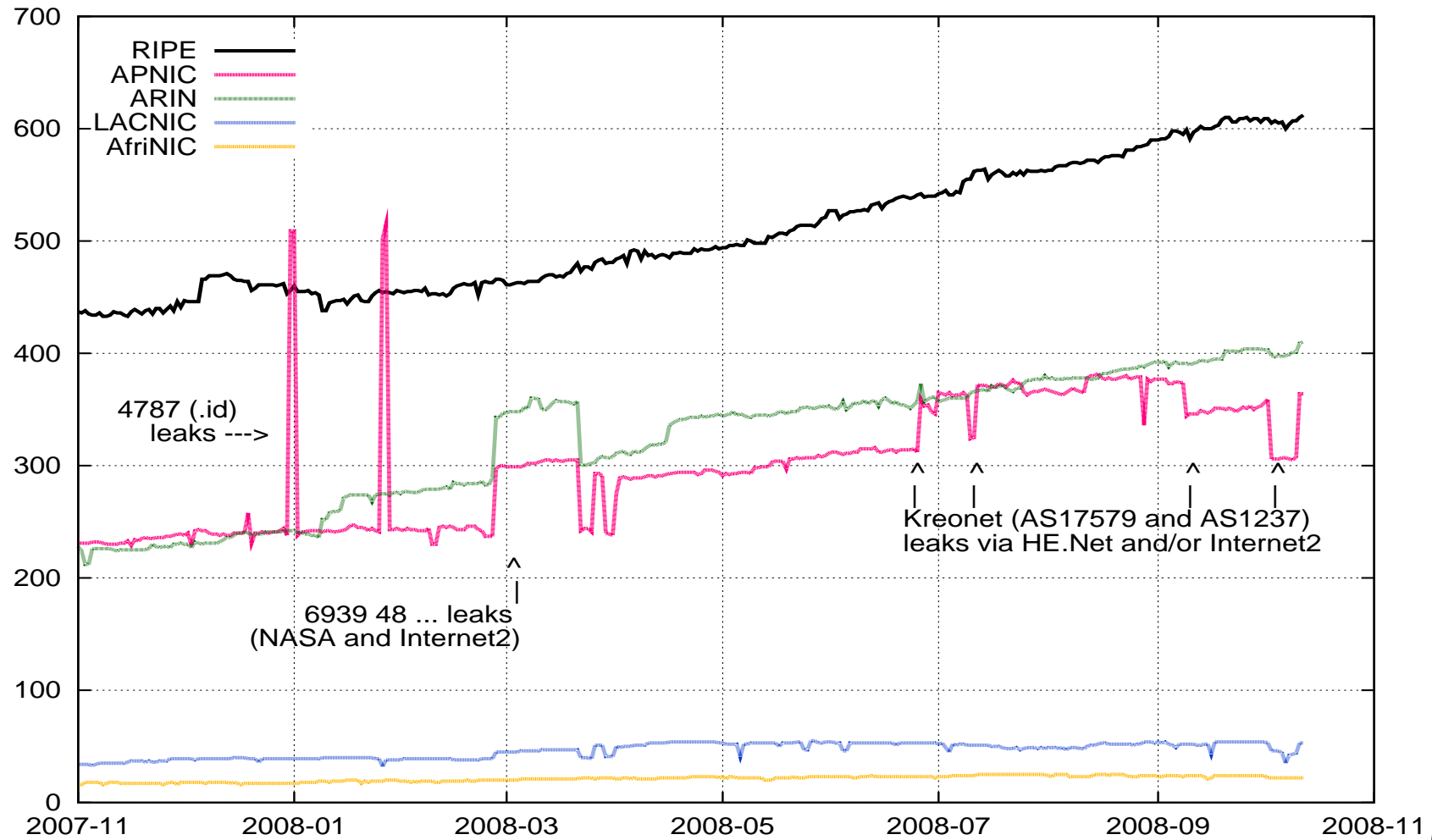
Graphics: zoom into last 6 months



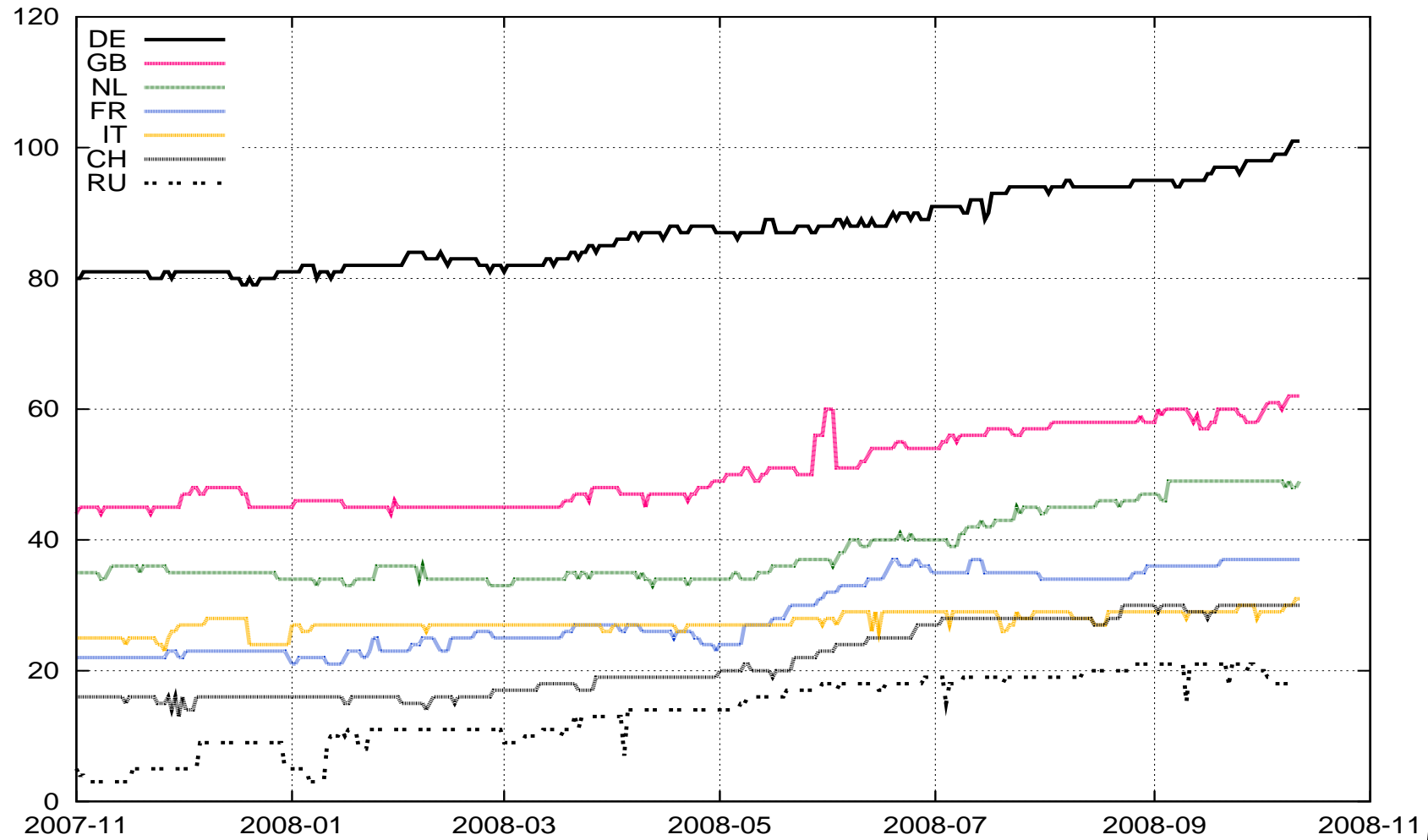
Graphics: trends? (RIR prefixes, 24 months)



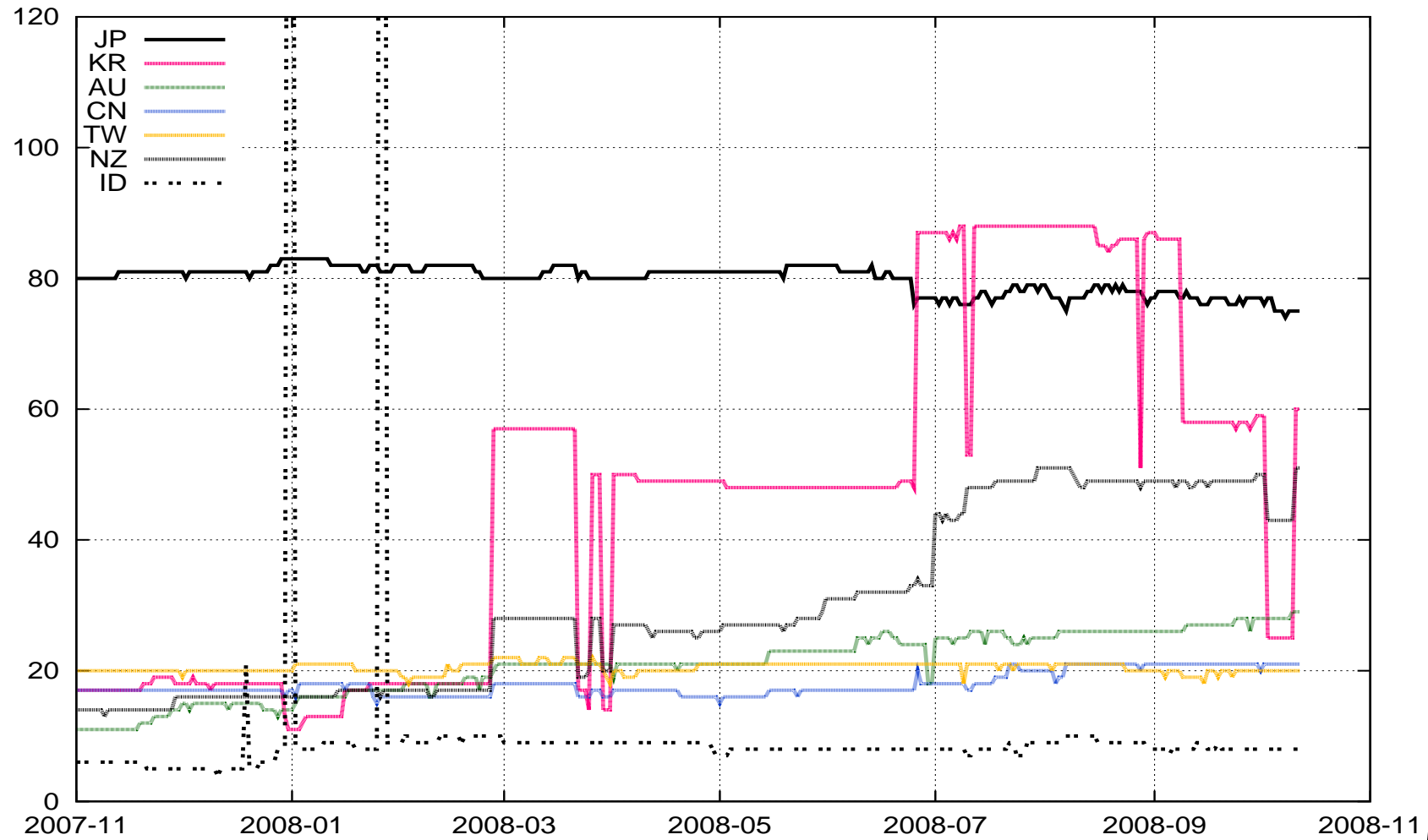
Graphics: prefixes by RIR region



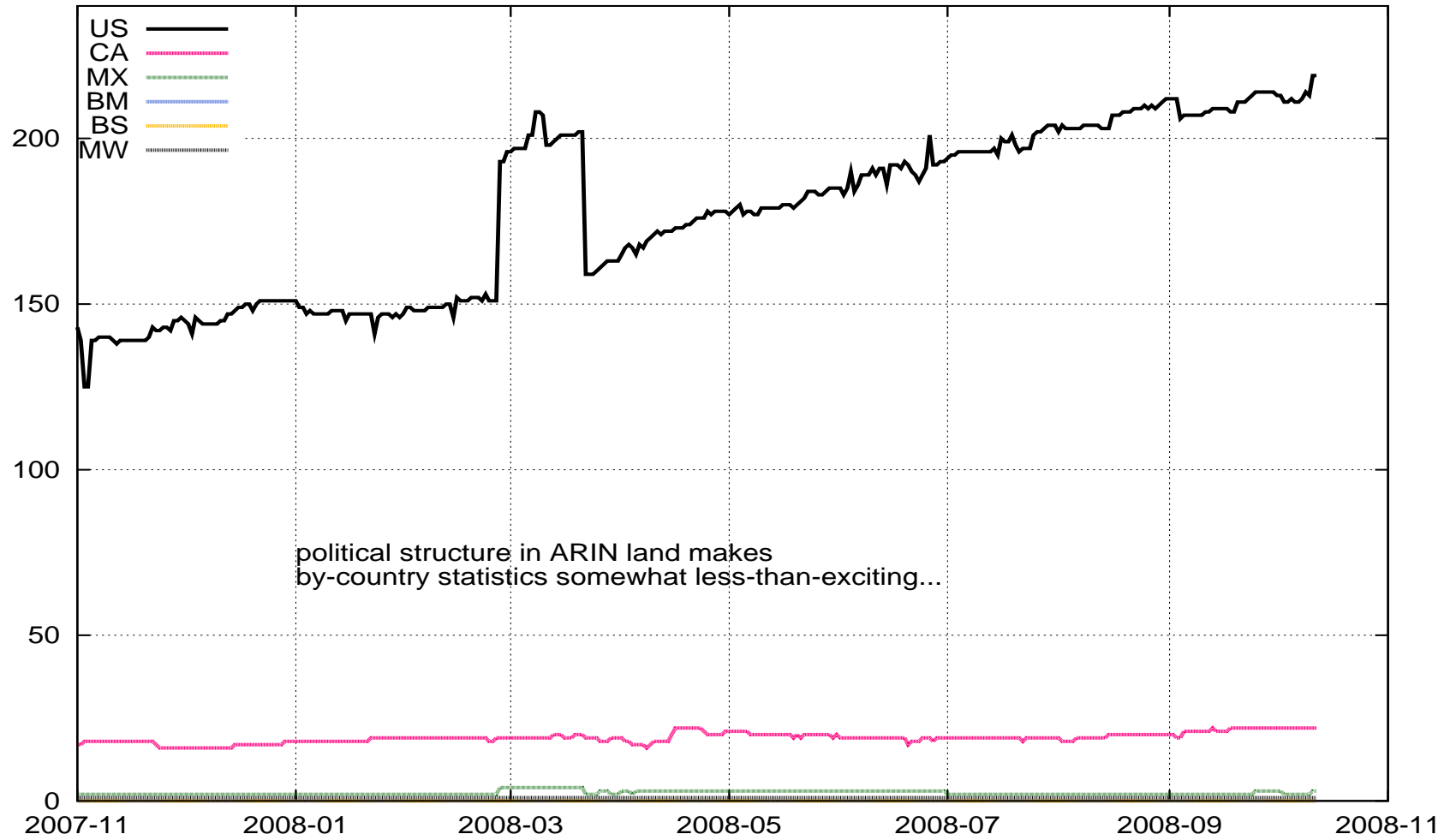
Graphics: prefixes by country (RIPE)



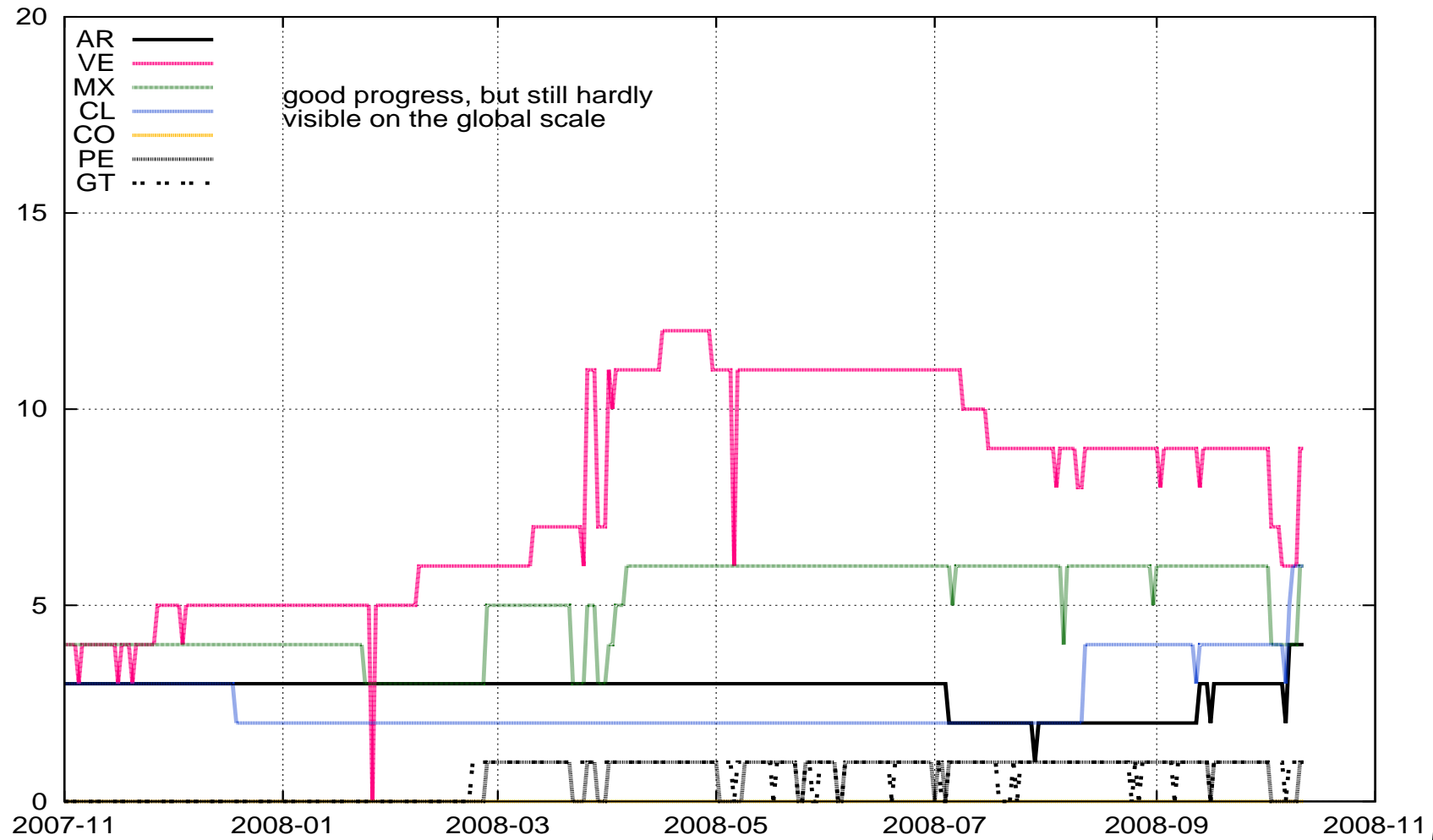
Graphics: prefixes by country (APNIC)



Graphics: prefixes by country (ARIN)



Graphics: prefixes by country (LACNIC)



Numbers - AS numbers

- as of 2008-10-12: 1109 unique AS#s visible (2008-05-04: 933)
 - 776 origin-only ASes (no transit paths seen) (646)
 - 295 ASes originate & give transit (253)
 - 38 transit-only ASes (e.g. 57, 1125, 4641, 6667, ...) (34)
- different number of prefixes announced
 - 0 ASes originate 6Bone (3ffe) prefixes (*hooray!*)
 - 917 ASes originate 1 RIR prefix (775)
 - 94 ASes originate 2 RIR prefixes (2 due to /32+/35)
 - 33 ASes originate 3 RIR prefixes
 - 27 ASes with “more than that”, max. is 34 & 41 prefixes
- 2 ASes still announce their prefix as /32 and /35
- note: all paths observed from AS5539

ASes - why are people announcing 2+ prefixes

- /35 to /32 migration: 2 RIR prefixes, *temporary (?)*

2001:420::/35	109 i
2001:420::/32	109 i

- ISP/LIR address space plus IXP prefixes

2001:5000::/21	1273 i	(C&W LIR space)
2001:7F8:2B::/48	1273 i	(IXP: INXS HAM)
2001:7F8:2C::/48	1273 i	(IXP: INXS MUC)

- mergers and acquisitions, business units, customer pfxs, ...

2001:218::/32	2914 i	NTT JP
2001:418::/32	2914 i	NTT America
2001:500:13::/48	2914 i	ARIN PI
2001:728::/32	2914 i	Verio Europe
2406:A000::/32	2914 i	Sempernet V6 Australia
2610:F8:8000::/35	2914 i	Command Information Inc.

- networks with multiple sites and multiple PI prefixes

2001:500:16::/48	3257 6453 12041 i	Afilias
2001:500:17::/48	12041 i	Afilias
2001:500:18::/48	12041 i	Afilias
2001:500:19::/48	2914 12041 i	Afilias
2001:500:1A::/48	3257 6453 12041 i	Afilias
2001:500:1B::/48	12041 i	Afilias

ASes - 32 bit ASNs showing up

- sidetrack: some 32 bit AS numbers already active

Network	Path
*> 2001:3a0:8000::/35	5539 2914 4697 2.3 2.7 ?
*> 2001:df0:2::/48	5539 1273 2497 2.3 i
*> 2001:4810:2000::/35	5539 1273 29748 33437 6.3 i
*> 2403:2000::/32	5539 3257 2497 2500 18146 2.9 i

Total number of prefixes 4

- this needs Quagga or IOS XR to see – others will see “2-byte tunnel AS” 23456:

```
*>i2001:3A0:8000::/35
      2001:7F8::B62:0:1      2914 4697 23456 23456 ?
* i      2001:608:0:FFF:1::6  2914 4697 23456 23456 ?
*      ::FFFF:203.14.5.7      1221 4777 38610 30071 2914 4697 23456 23456 ?
*      2001:470:1FFF:2::      6939 2914 4697 23456 23456 i
*      2001:608:0:3::3        1853 1853 3356 2914 4697 23456 23456 ?
*      2001:420:0:7FF0::1     109 5511 2914 4697 23456 23456 ?
```

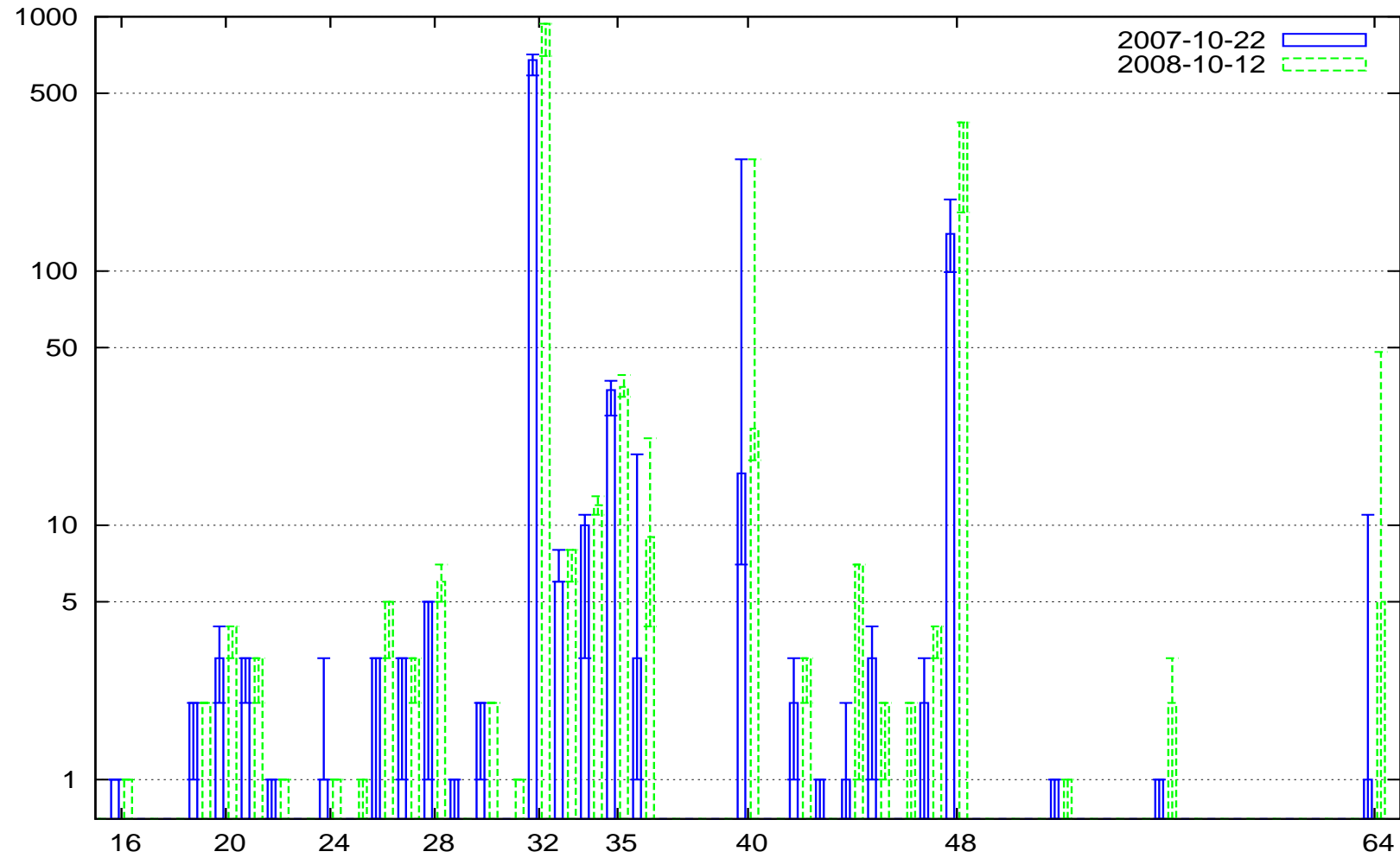
- see RFC 4893 for the details (and bug your vendor)

Numbers - Prefixes

As of 2008-10-12: 1466 prefixes in total (2008-05-04: 1214)

/n	global	RIPE	APNIC	ARIN	Lacn.	Afri.	oth
/16	1	0	0	0	0	0	1
/19	2	2	0	0	0	0	0
/20..23	8	4	4	0	0	0	0
/24..27	10	5	4	1	0	0	0
/28..31	9	2	6	0	1	0	0
/32	938	501	195	182	37	17	6
/33..34	20	7	5	8	0	0	0
/35	35	8	18	9	0	0	0
/36	9	3	0	5	1	0	0
/40	24	8	4	8	2	2	0
/42	3	2	0	1	0	0	0
/44..47	15	3	1	11	0	0	0
/48	384	65	120	181	13	3	2
/49..63	3	0	1	2	0	0	0
/64..128	5	0	4	0	0	0	1

Graphics - Prefixes



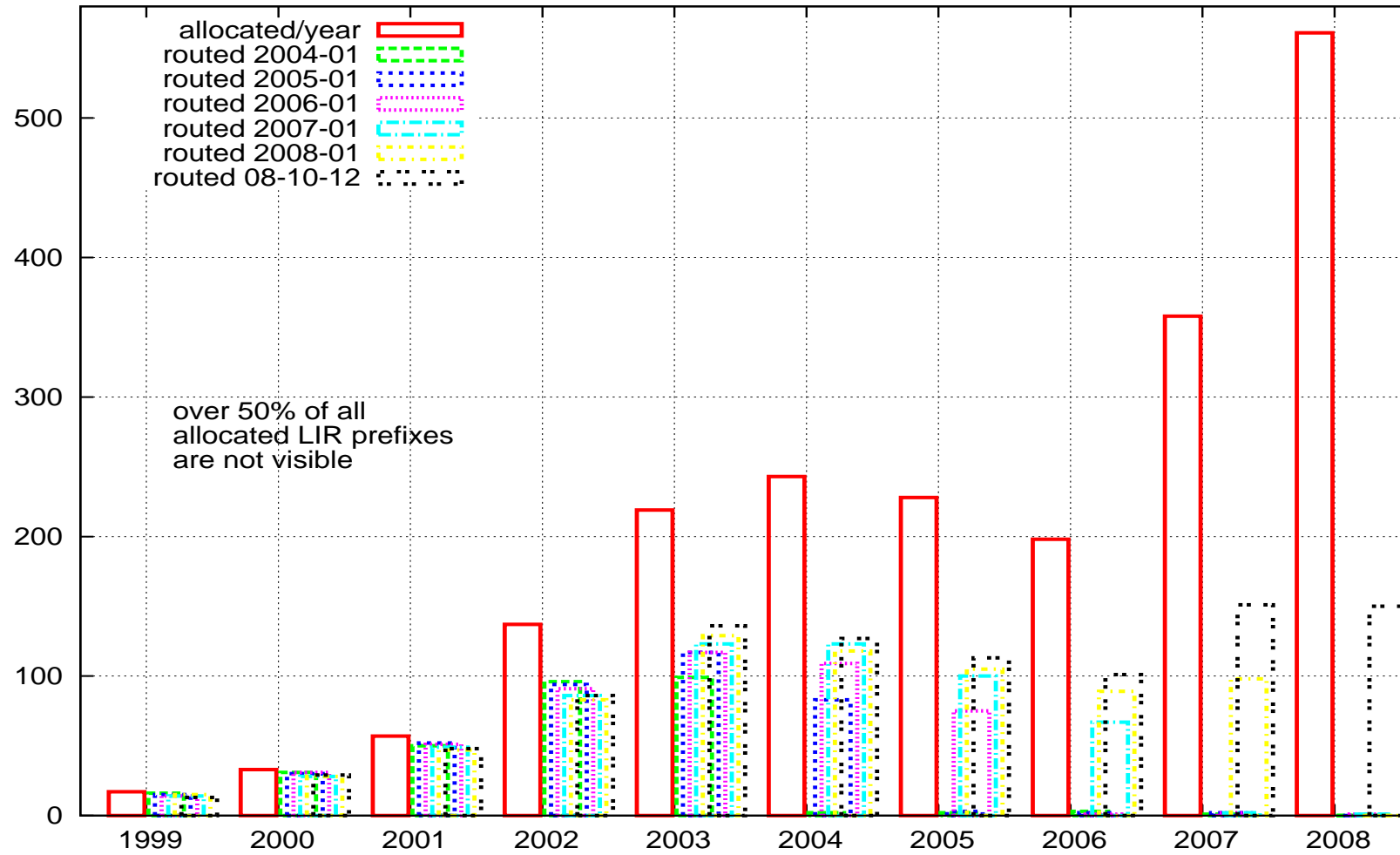
Numbers: RIRs, Allocations, ...

- On 2008-10-12, 2122 LIR blocks (2000:: $/4$) allocated by RIRs:

RIR	alloc.	members	perc.	on 2008-05-04
ARIN	487	~ 3200	15.2%	408 (+19%)
APNIC	430	~ ?	?%	366 (+17%)
RIPE	1052	~ 5920	17.7%	878 (+20%)
LACNIC	101	~ 1006	10.1%	95 (+6%)
AfriNIC	52	~ ?	?%	43 (+21%)

- note: not counting $/48$ microallocs and $/35 \Rightarrow /32$ extentions
- actual *percentage* with IPv6 similar among regions
- 949 (R56: 799) allocations visible in routing table (*only 45%!*)

Graphics: Allocated vs. Routed



Allocated vs. Routed - by region & class

RIR	type	alloc.	visible	perc.	subnets
ARIN	LIR	459	183	40%	88
	IXP	22	0	0%	0
	Critical Inf.	52	23	42%	32
	Internal Inf.	3	0	0%	0
	PI	169	34	20%	48 (*)
APNIC	LIR	426	207	49%	129
	IXP	21	2	10%	0
	PI	38	6	16%	18 (*)
RIPE	LIR	1052	509	48%	101
	IXP	72	13	18%	0
	Anycast DNS	8	5	63%	0
LACNIC	LIR	100	33	33%	19
	Crit.Inf.+PI	8	2	25%	0
AfriNIC	LIR	50	17	34%	2
	PI	8	3	38%	0

Allocated vs. Routed - reasons?

- “early adopters” already losing interest in IPv6?
- “prepare for the future” allocations?
- “for internal use” allocations? (some, yes)
- distribution of non-announced prefixes does not show any specific characteristic, like “academia” vs. “commercial networks” etc.
- some delay between prefix allocation and announcement is to be expected (expect some more statistics in this space...)
 - but this cannot explain effects seen on 2003+2004 allocations – about 40% don’t show up after over 3 years...

Numbers: notable allocations - PI news

- 9 new IPv6 PI networks from APNIC (4 in BGP)
 - 2001:DE8:2::/48 VoIP eXchange Point Indonesia
 - 2001:DE8:4::/46 Equinix Asia Pacific
 - 2001:DF0:5::/48 NTT West IPv6 Labs (!?)
 - 2001:DF0:6::/48 VOCUS Pty Ltd, Sydney
 - 2001:DF0:7::/48 Microsoft Japan
 - 2001:DF0:8::/48 JPNIC registry services
 - 2001:DF0:9::/48 BarNetwork ISP, Sydney
 - 2001:DF0:a::/48 APNIC Training IPv6 Address
 - 2001:DF0:20::/43 HP IPv6 networks for Asia Pacific region
- 4 IPv6 PI networks from LacNIC (1 in BGP)
 - 2001:13c7:6000::/48 Camara Colombiana de Inform. y Telecom.
 - 2001:13c7:6001::/48 Camara Argent. de Base de Datos y .. Linea
 - 2001:13c7:7000::/48 NIC Mexico
 - 2001:13c7:7001::/48 LACNIC

Numbers: notable allocations (2)

- 2 new IPv6 PI networks from AfriNIC (0 in BGP)
 - 2001:43F8:50::/48 BNR Consulting, South Africa
 - 2001:43F8:60::/48 Kenya Internet Exchange point
- 51 new “direct” assignments from ARIN, 4+(32) in BGP
 - 2620:0:a00::/43 HP-V6-Internet (32x /48)
 - 2620:0:1000::/40 Google IT IPv6 (?!)
- new DNS anycast assignments from RIPE (2001:678::/29)
 - 2001:0678:5::/48 .TM, TM Domain Registry Ltd (2007/10/10)
 - 2001:0678:6::/48 .LT, Kaunas University (2007/12/11) (in BGP)
- (a few) more “very large” allocations seen:
 - 2408::/22 NTT East JP
 - 2a00:800::/25 Tele2 / SWIPnet SE
 - 2a01:c00::/26 HanseNet DE (DSL provider)
 - 2a01:e00::/26 Proxad FR (DSL provider)
- ⇒ **check your BGP filters!!**

Interesting Observations - New Year's Spikes

```

Network          Path
* 2001:D10::/32  1221 30071 2914 10204 4787 i
*                6939 2914 10204 4787 i
*                109 6175 4787 i
*>i             3257 6175 4787 i

* 2001:D10::/36  6939 278 6435 4787 i
* 2001:D10::/40  6939 278 6435 4787 i
* 2001:D10:100::/40 6939 278 6435 4787 i
* 2001:D10:200::/40 6939 278 6435 4787 i
...
* 2001:D10:E000::/36 6939 278 6435 4787 i
* 2001:D10:E000::/40 6939 278 6435 4787 i
* 2001:D10:E100::/40 6939 278 6435 4787 i
...
* 2001:D10:F000::/36 6939 278 6435 4787 i
...
* 2001:D10:FE00::/40 6939 278 6435 4787 i
* 2001:D10:FF00::/40 6939 278 6435 4787 i

```

- for 2x 2 days, AS 4787 (Indonesia) leaked 16 /36s and 256 /40s
- path via LavaNet Honolulu, Red Academia Mexico, HE.NET
- ⇒ please *check* what you give transit for!

Interesting Observations - Routing Out Of Space

Network	Path
2001:2B8::/32	109 4555 4555 6939 24 11537 17579 1237 17832 i 3257 2497 2500 7660 22388 11537 17579 1237 17832 i 1221 38610 38610 18203 18084 2500 7660 22388 11537 17579 1237 17832 i
2001:2B8:90::/48	6939 24 11537 17579 1237 i
2001:2B8:94::/48	6939 24 11537 17579 1237 i
2001:2B8:9A::/48	6939 24 11537 17579 1237 i
2001:2B8:9C::/48	6939 24 11537 17579 1237 i
...	
2001:4D0:8100::/40	6939 24 i
2001:4D0:8102:20::/64	6939 24 i
2001:4D0:8102:32::/64	6939 24 i
2001:4D0:8102:44::/64	6939 24 i
2001:4D0:8102:52::/64	6939 24 i
...	
2001:504:B:10::/64	6939 24 i
2001:504:B:11::/64	6939 24 i
2001:504:B:30::/64	6939 24 i
...	

- NASA (AS 48) leaked a bunch of more-specifics to HE.NET
- worse, Internet2 (AS 11537) leaks *Korean* more specifics
- leak at NASA fixed after notification by Bernhard Schmidt

Interesting Observations - Research in Progress...?

```
      Network          Path
* > 2001:2B8::/32      3257 2497 2500 7660 22388 11537 17579 1237 17832 i
* 2001:2B8:90::/48    109 5511 10764 11537 17579 1237 i
* 2001:2B8:94::/48    109 5511 10764 11537 17579 1237 i
* 2001:2B8:9A::/48    109 5511 10764 11537 17579 1237 i
* 2001:2B8:9C::/48    109 5511 10764 11537 17579 1237 i
...
* > 2001:3C8::/32      3257 2497 2500 7660 24287 24490 24475 4621 i
* 2001:3C8:9007::/48  109 5511 10764 11537 4621 4621 ?
* 2001:3C8:9009::/48  109 5511 10764 11537 4621 4621 ?
* 2001:3C8:9103::/48  109 5511 10764 11537 4621 4621 ?
* 2001:3C8:C103::/48  109 5511 10764 11537 4621 4621 ?
...
```

- Internet2 (AS 11537) now leaks via NCSA and OpenTransit
- Korean RENs 1237 and 17579 only have I2 as transit :(
- Thai REN 4621 has other transit, but still leaks via I2 :(
- long-standing problem: research networks with poor connectivity, due to political issues or plain disinterest

Interesting Observations - PI funnies...

- wondering why AS 33 is announcing 34 prefixes...

Network	Path
2001:DF0:20::/44	3257 6175 33 i
2001:DF0:30::/44	3257 6175 33 i
2620:0:A00::/48	3257 6175 33 i
2620:0:A01::/48	3257 6175 33 i
2620:0:A02::/48	3257 6175 33 i
2620:0:A03::/48	3257 6175 33 i
2620:0:A04::/48	3257 6175 33 i
2620:0:A05::/48	3257 6175 33 i
2620:0:A06::/48	3257 6175 33 i
...	
2620:0:A1D::/48	3257 6175 33 i
2620:0:A1E::/48	3257 6175 33 i
2620:0:A1F::/48	3257 6175 33 i

- PI /43 from APNIC, PI /43 from ARIN
- checking BGP paths and traceroutes suggest “same router”
- so one has to wonder why?

Interesting Observations - Zero matters!

- from 2008-03-28 ... 2008-04-05 we saw...

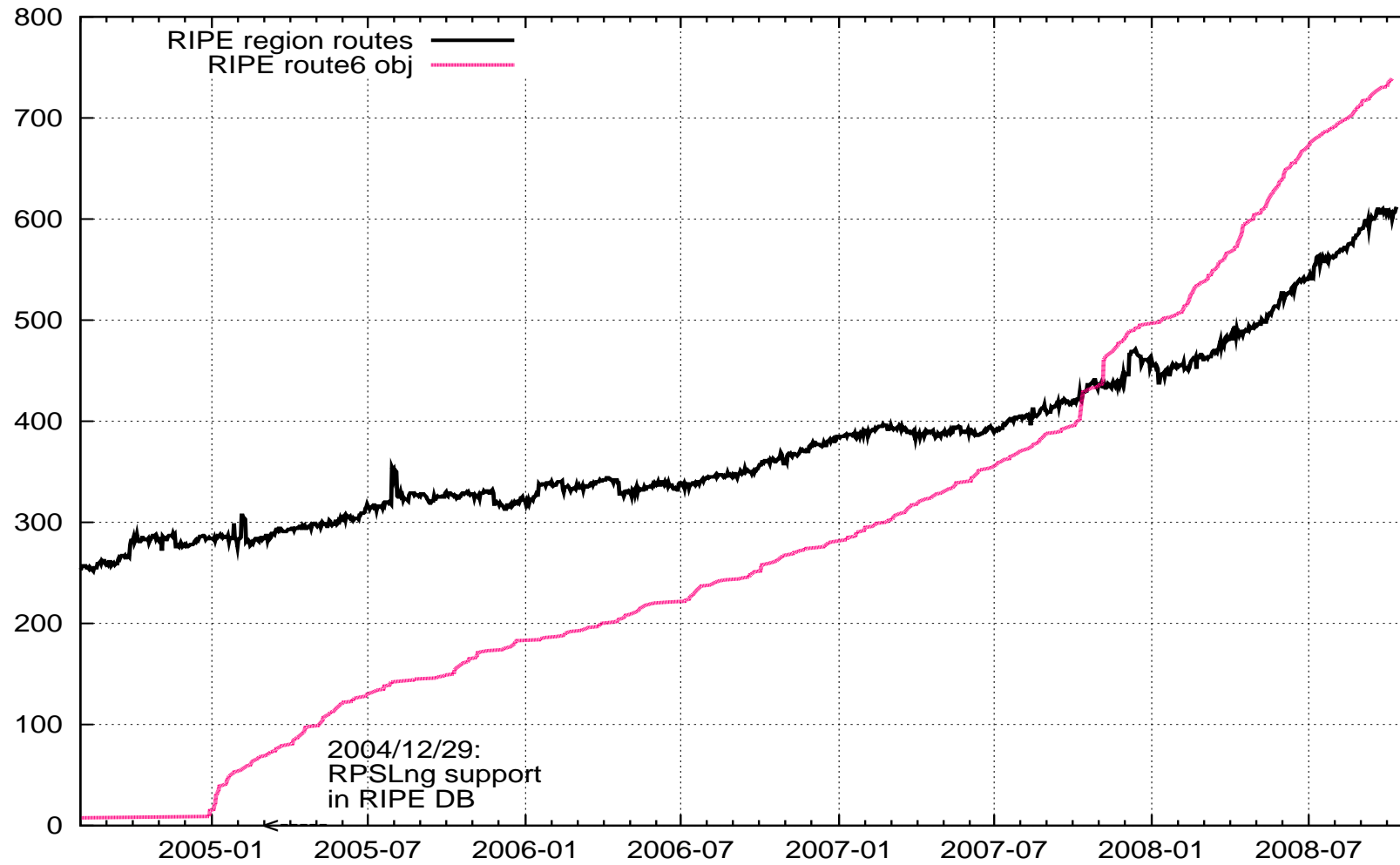
Network	Path
2607:F35::/32	6939 27630 i
	1273 6939 27630 i
	109 30071 6939 27630 i
	1853 3356 3257 6939 27630 i

- ... and now...

Network	Path
2607:F350::/32	6939 27630 i
	1273 6939 27630 i
	109 30071 6939 27630 i
	1853 3356 3257 6939 27630 i

- looks very much like a typo, but should not have been visible
- ⇒ better downstream BGP filters needed!

Graphics: route6 objects vs. routes seen



route6 correlation (RIPE region)

- on 2008-05-04:
 - 492 BGP routes from RIPE region
 - 630 route6: objects in RIPE DB
- correlation?
 - multiple origin route6's (11x 2002::/16, 5x 2001::/32, ...)
 - \Rightarrow 612 route6 objects for *unique* prefixes
 - 43 route6 objects for prefixes from *other* RIRs...
- so...

route6 correlation (2)

- ... and this is what I found:

RIPE prefix, route6 ok	358	:-)
RIPE prefix, route6 missing	125	!!!
RIPE prefix, route6 origin mismatch	8	
RIPE prefix, BGP inconsistant AS	6	
route6 objects without BGP route	201	???
other region, route6 ok	40	
other region, route6 missing	679	
other region, route6 origin mismatch	3	
other region, BGP inconsistant AS	9	

- ⇒ close-up view shows “more work needed”
- in other RIR regions, situation is worse (no IRR DBs yet, etc.)

route6 object example

- it's as easy as this...

```
route6:      2001:608::/32
descr:      DE-SPACE-2001-0608
descr:      SpaceNET AG, Munich
origin:     AS5539
notify:     noc@space.net
mnt-by:     SPACENET-N
changed:    gert@space.net 20041230
source:     RIPE
```

- strongly recommended, helps upstream/peer ASes build decent BGP filters, based on IRR data

References

- Ghost Route Hunter: <http://www.sixxs.net/tools/grh/>
- List of IPv6 blocks allocated by the RIRs:
<http://www.ripe.net/rs/ipv6/stats/index.html>
- MIPP (minimum peering policy) project:
<http://ip6.de.easynet.net/ipv6-minimum-peering.txt>
- IPv6 sample prefix filter page
<http://www.space.net/~gert/RIPE/ipv6-filters.html>
- Slides are available at:
<http://www.space.net/~gert/RIPE/Arin22-v6-table/>

Questions?

gert@space.net